

ASSEMBLY INSTRUCTIONS



Counter Top Use

NOTE: iPad, charging cable and cable lock are not included.

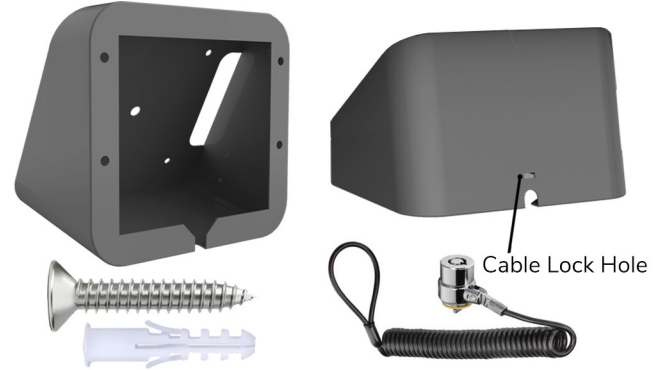


Wall Mounted Use

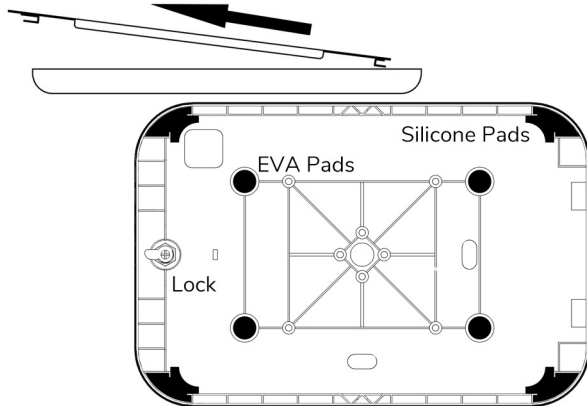
1. The enclosure can be set to either portrait or landscape orientation.



2. The tablet stand can be installed on counter top or wall mount by 4 screws (need to remove the tablet case). The stand can be locked by cable lock too.



3. Unlock the cover and take out the panel diagonally. Please choose to use different silicone and EVA pads according to your iPad size. (Silicone & EVA pads are in tablet enclosure box)



4. Carefully place your iPad inside the enclosure. Connect the charging cable with the iPad. Then close the cover and securely lock it to the enclosure.



CAUTION:
Hold the iPad in place!